

- High flow modular air-preparation series
- Space saving integral gauge (P31 size only)
- Manifold style regulators available
- OSHA compliant shut-off valves

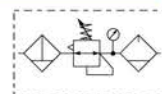


Operating information		Flow characteristics					
Working pressure :		40mm body width		60mm body width		73mm body width	
Plastic bowl: 10 bar max		1/4" Ported		1/4", 3/8", & 1/2" Ported		1/2" & 3/4" Ported	
Metal bowl: 17 bar max		Flow	dm³/s	Flow	dm³/s	Flow	dm³/s
Working temperature :		Filter	12	Filter	39	Filter	40
* Plastic bowl: -10°C to +52°C		Coalescing Filter	3,6	Coalescing Filter	17	Coalescing Filter	34
* Metal bowl: -10°C to +65.5°C		Regulator	32	Regulator	78	Regulator	111
* Refer to Technical Catalogue for individual unit temperatures		Filter Regulator	35	Filter Regulator	64	Filter Regulator	108
		Lubricator	19	Lubricator	42	Lubricator	71

Popular Combinations - P31 Series



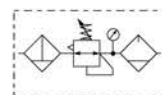
Filter + Regulator + Lubricator Combinations + Poly bowl
5 micron element, 8 bar Regulator + Gauge and Wall Mounting Brackets
Inlet pressure 10 bar, Secondary pressure 6.3 bar, 1 bar pressure drop.



Port size	Flow dm ³ /s	Flow (scfm)	Manual Drain	Weight	Pulse Drain	Weight
1/4"	13	27	P31CB12GEMNTLNW	0.46 kg	P31CB12GEBNTLNW	0.46 kg



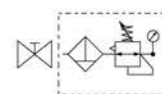
Filter/Regulator + Lubricator Combinations + Poly bowl
5 micron element, 8 bar Regulator + Gauge and Wall Mounting Brackets
Inlet pressure 10 bar, Secondary pressure 6.3 bar, 1 bar pressure drop.



Port size	Flow dm ³ /s	Flow (scfm)	Manual Drain	Weight	Pulse Drain	Weight
1/4"	14	28	P31CA12GEMNTLNW	0.35 kg	P31CA12GEBNTLNW	0.35 kg



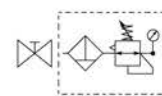
Ball Valve + Filter/Regulator + Lubricator Combinations + Poly bowl
5 micron element, 8 bar Regulator + Gauge and Wall Mounting Brackets
Inlet pressure 10 bar, Secondary pressure 6.3 bar, 1 bar pressure drop.



Port size	Flow dm ³ /s	Flow (scfm)	Manual Drain	Weight	Pulse Drain	Weight
1/4"	14	28	P31QA12GEMNTLNW	0.54 kg	P31QA12GEBNTLNW	0.54 kg



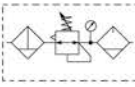
Ball Valve + Filter/Regulator Combinations + Poly bowl
5 micron element, 8 bar Regulator + Gauge and Wall Mounting Brackets
Inlet pressure 10 bar, Secondary pressure 6.3 bar, 1 bar pressure drop.



Port size	Flow dm ³ /s	Flow (scfm)	Manual Drain	Weight	Pulse Drain	Weight
1/4"	14	28	P31QN12GEMNTW	0.4 kg	P31QN12GEBNTW	0.4 kg

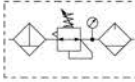
P 3 1					E		N		LN	W
Combination		Thread type		Port size		Drain type		Adjustment range		Add only for options with Lubricator
Combination C		BSPP 1		1/4 2		Manual drain M		With square gauge		
Shut off + Combi ¹ Q		NPT 9				Pulse drain B		2 bar * V		
Combination type		Bowl type						4 bar S		
F/R+L A		Poly bowl with bowl guard G						8 bar ** T		
F+R+L B		Metal bowl without sight glass M								
F/R N										
		Note: All bowl types are the same for each component								
		Example: If a "G" is specified for a F+L, both units would get a poly bowl with bowl guard.								
								* Unit comes with 0-4 bar, gauge respectively		
								** Unit comes with 0-10 bar, gauge respectively		
								¹ Option not available with F+R+L		

Popular Combinations - P33 Series



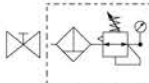
Filter + Regulator + Lubricator Combinations + Poly bowl
5 micron element, 8 bar Regulator + Gauge and Wall Mounting Brackets
Inlet pressure 10 bar, Secondary pressure 6.3 bar, 1 bar pressure drop.

Port size	Flow dm ³ /s (scfm)		Manual Drain	Weight	Auto Drain	Weight
1/2"	43	90	P33CB14GEMNGLNW	1.84 kg (4.06 lbs)	P33CB14GEANGLNW	1.84 kg (4.06 lbs)
3/4"	52	110	P33CB16GEMNGLNW	1.84 kg (4.06 lbs)	P33CB16GEANGLNW	1.84 kg (4.06 lbs)



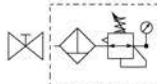
Filter/Regulator + Lubricator Combinations + Poly bowl
5 micron element, 8 bar Regulator + Gauge and Wall Mounting Brackets
Inlet pressure 10 bar, Secondary pressure 6.3 bar, 1 bar pressure drop.

Port size	Flow dm ³ /s (scfm)		Manual Drain	Weight	Auto Drain	Weight
1/2"	52	110	P33CA14GEMNGLNW	1.51 kg (3.33 lbs)	P33CA14GEANGLNW	1.51 kg (3.33 lbs)
3/4"	71	150	P33CA16GEMNGLNW	1.51 kg (3.33 lbs)	P33CA16GEANGLNW	1.51 kg (3.33 lbs)



Ball Valve + Filter/Regulator + Lubricator Combinations + Poly bowl
5 micron element, 8 bar Regulator + Gauge and Wall Mounting Brackets
Inlet pressure 10 bar, Secondary pressure 6.3 bar, 1 bar pressure drop.

Port size	Flow dm ³ /s (scfm)		Manual Drain	Weight	Auto Drain	Weight
1/2"	52	110	P33QA14GEMNGLNW	2.35 kg (5.2 lbs)	P33QA14GEANGLNW	2.35 kg (5.2 lbs)
3/4"	71	150	P33QA16GEMNGLNW	2.35 kg (5.2 lbs)	P33QA16GEANGLNW	2.35 kg (5.2 lbs)

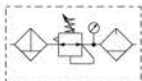


Ball Valve + Filter/Regulator Combinations + Poly bowl
5 micron element, 8 bar Regulator + Gauge and Wall Mounting Brackets
Inlet pressure 10 bar, Secondary pressure 6.3 bar, 1 bar pressure drop.

Port size	Flow dm ³ /s (scfm)		Manual Drain	Weight	Auto Drain	Weight
1/2"	52	110	P33QN14GEMNGW	1.7 kg (3.75 lbs)	P33QN14GEANGW	1.7 kg (3.75 lbs)
3/4"	71	150	P33QN16GEMNGW	1.7 kg (3.75 lbs)	P33QN16GEANGW	1.7 kg (3.75 lbs)

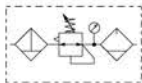
P 3 3						E		N		L N	W
Combination		Thread type		Port size		Drain type		Adjustment range		Add only for options with Lubricator	
Combination C		BSPP 1		1/2 4		Auto drain A		With round gauge			
Shut off + Combination ¹ Q		NPT 9		3/4 6		Manual drain M		0-2 bar; 0-30 psi; 0.2 MPa Z			
								4 bar; 60 psi; 0.4 MPa M			
								8 bar; 125 psi; 0.8 MPa G			
¹ Option not available with F+R+L.											
Combination type		Bowl type									
F/R+L A		Poly bowl with bowl guard G									
F+R+L B		Metal bowl with sight glass S									
F/R N											
Note: All bowl types are the same for each component											
Example: If a "G" is specified for a F+L, both units would get a poly bowl with bowl guard.											

Popular Combinations - P32 Series



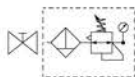
Filter + Regulator + Lubricator Combinations + Poly bowl
5 micron element, 8 bar Regulator + Gauge and Wall Mounting Brackets
Inlet pressure 10 bar, Secondary pressure 6.3 bar, 1 bar pressure drop.

Port size	Flow		Manual Drain	Weight	Auto Drain	Weight
	dm ³ /s	(scfm)				
1/4"	20	42	P32CB12GEMNGLNW	1.29 kg	P32CB12GEANGLNW	1.29 kg
3/8"	32	68	P32CB13GEMNGLNW	1.29 kg	P32CB13GEANGLNW	1.29 kg
1/2"	40	85	P32CB14GEMNGLNW	1.29 kg	P32CB14GEANGLNW	1.29 kg



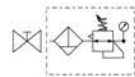
Filter/Regulator + Lubricator Combinations + Poly bowl
5 micron element, 8 bar Regulator + Gauge and Wall Mounting Brackets
Inlet pressure 10 bar, Secondary pressure 6.3 bar, 1 bar pressure drop.

Port size	Flow		Manual Drain	Weight	Auto Drain	Weight
	dm ³ /s	(scfm)				
1/4"	22	45	P32CA12GEMNGLNW	1.03 kg	P32CA12GEANGLNW	1.03 kg
3/8"	33	70	P32CA13GEMNGLNW	1.03 kg	P32CA13GEANGLNW	1.03 kg
1/2"	43	90	P32CA14GEMNGLNW	1.03 kg	P32CA14GEANGLNW	1.03 kg



Ball Valve + Filter/Regulator + Lubricator Combinations + Poly bowl
5 micron element, 8 bar Regulator + Gauge and Wall Mounting Brackets
Inlet pressure 10 bar, Secondary pressure 6.3 bar, 1 bar pressure drop.

Port size	Flow		Manual Drain	Weight	Auto Drain	Weight
	dm ³ /s	(scfm)				
3/8"	33	70	P32QA13GEMNGLNW	1.5 kg	P32QA13GEANGLNW	1.5 kg
1/2"	43	90	P32QA14GEMNGLNW	1.5 kg	P32QA14GEANGLNW	1.5 kg



Ball Valve + Filter/Regulator Combinations + Poly bowl
5 micron element, 8 bar Regulator + Gauge and Wall Mounting Brackets
Inlet pressure 10 bar, Secondary pressure 6.3 bar, 1 bar pressure drop.

Port size	Flow		Manual Drain	Weight	Auto Drain	Weight
	dm ³ /s	(scfm)				
3/8"	33	70	P32QN13GEMNGW	1.1 kg	P32QN13GEANGW	1.1 kg
1/2"	43	90	P32QN14GEMNGW	1.1 kg	P32QN14GEANGW	1.1 kg

P 3 2					E		N		L N	W
--------------	--	--	--	--	----------	--	----------	--	------------	----------

Combination		Thread type		Port size		Drain type		Adjustment range		Add only for options with Lubricator
Combination	C	BSPP	1	1/4	2	Auto drain	A	With round gauge		
Shut off + Combination ¹	Q	NPT	9	3/8	3	Manual drain	M	0-2 bar; 0-30 psi; 0.2 MPa	Z	
				1/2	4			4 bar; 60 psi; 0.4 MPa	M	
								8 bar; 125 psi; 0.8 MPa	G	

Combination type		Bowl type	
F/R+L	A	Poly bowl with bowl guard	G
F+R+L	B	Metal bowl with sight glass	S
F/R	N		

Note: All bowl types are the same for each component

Example: If a "G" is specified for a F+L, both units would get a poly bowl with bowl guard.

¹ Option not available with F+R+L and 1/4" port size (2)